

Radisson **BLU**
SENATOR HOTEL, LÜBECK

FEEL THE DIFFERENCE

PERSONAL
PROFESSIONAL

MEMORABLE

RADISSON
MEETINGS™



WELCOME

We understand that, whatever the occasion, the stakes are high. So, you want the best experience for your attendees.

When we work together, you can rest assured that your event is in good hands. Our Radisson Meetings concept and the solutions we design for you always keep the three pillars of a successful event at their core: personal, professional and memorable.

PERSONAL

We place you and your needs at the heart of our offer, making sure that we bring your vision to life.

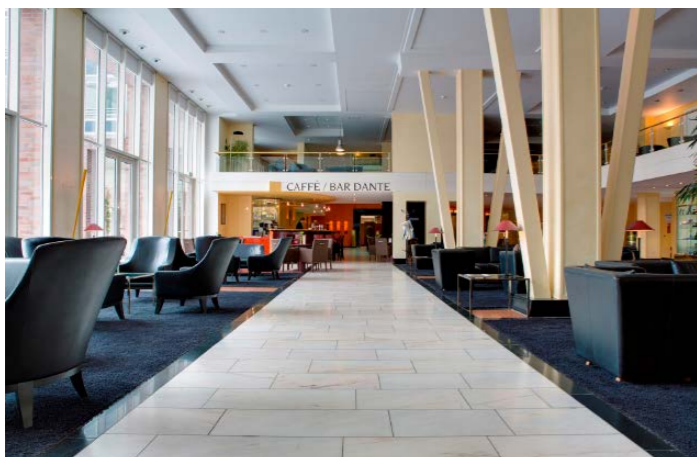
You'll have your own dedicated point of contact for the event who'll work with you as though they're part of your own team. They'll partner with you to coordinate and will ensure everything goes as planned.

PROFESSIONAL

You can be confident that you'll benefit from a great experience and a consistent, superior service. We provide you with everything you need to make your event a success: from modern audio-visual technology and free Wi-Fi to stationery, sufficient power sockets, chargers and adapters.

MEMORABLE

We want to surprise and delight your delegates by creating a memorable experience. When choosing our hotel, you can expect add-ons and personal touches that will help turn a successful meeting or event into a memorable one.





10

MEETING ROOMS

569

MAXIMUM CAPACITY

224

GUEST ROOMS WITH
8 SUPERIOR ROOMS

MEETING FACILITIES

The Radisson Blu Senator Hotel offers 224 rooms and 10 meeting rooms. In connection with the sister hotel, Park Inn by Radisson located opposite, there are 380 rooms and 15 meeting rooms available.

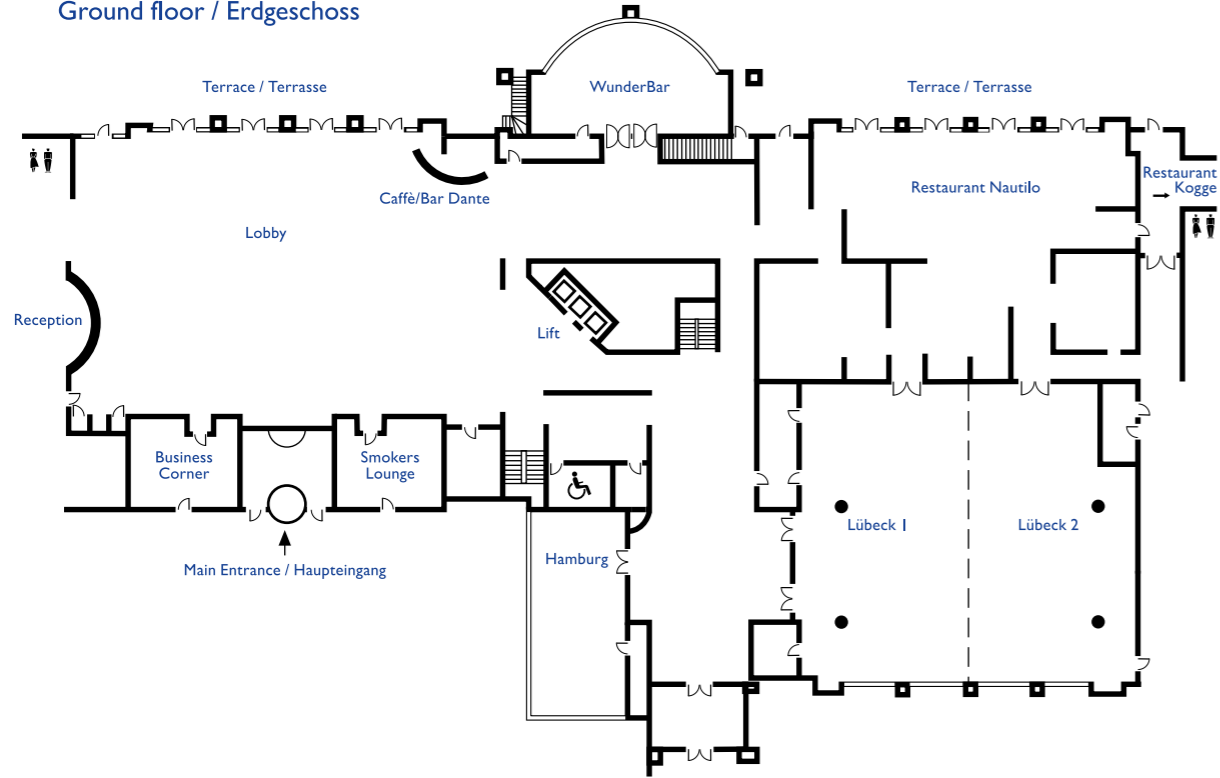
AV EQUIPMENT

- Projector
- Easy-to-use screen connectivity
- Sound system
- Conference speaker phone - on request
- Wireless presenter clicker
- Chargers and adapters - on request

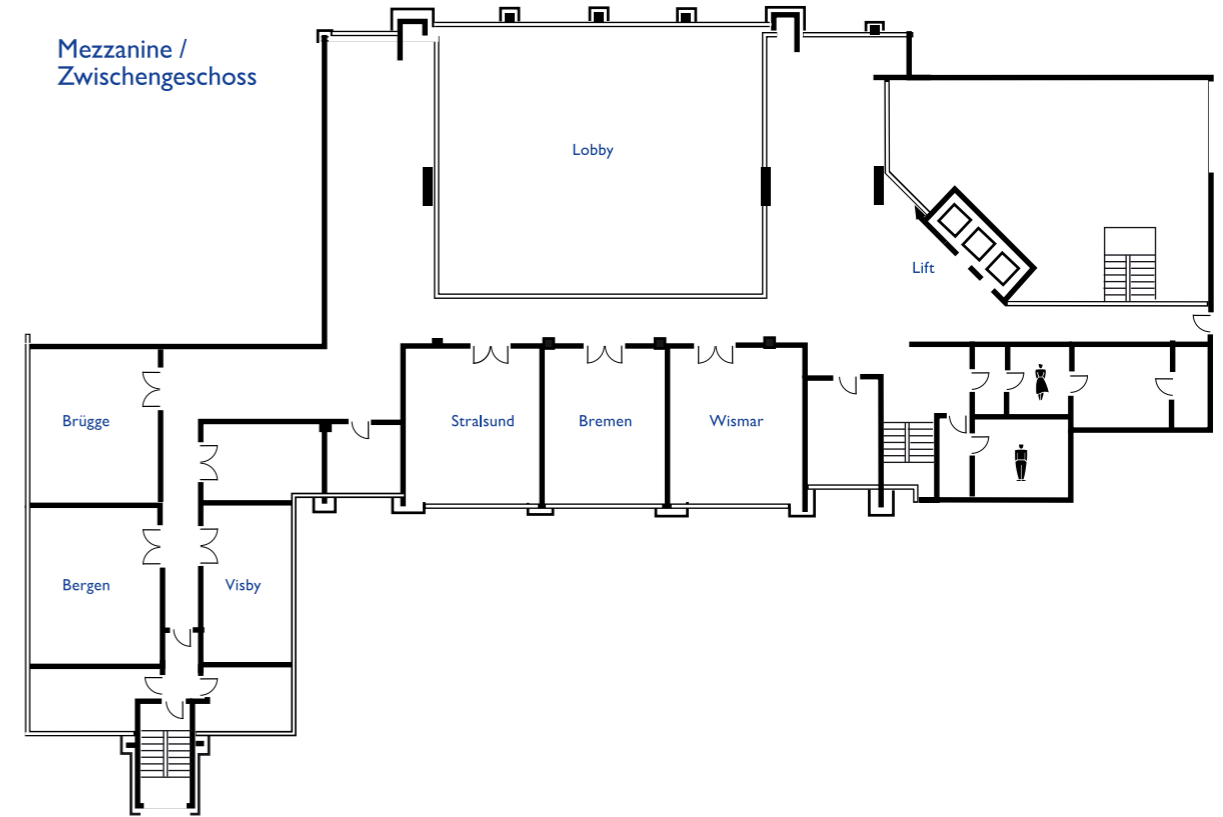
FACILITIES AND AMENITIES

- Breakout area
- Natural daylight
- Flipchart
- Printing services
- Stationery
- Lectern - on request
- Stage - on request
- Dance floor - on request

Ground floor / Erdgeschoss



Mezzanine / Zwischengeschoss



ROOMS	BOARD-ROOM	THEATER	CLASS-ROOM	U-SHAPE	CABARET	BANQUET	CEILING HEIGHT	LENGTH & WIDTH	SQM
Luebeck 1+2	-	360	200	70	84	240	3,68	20 x 18	360
Lübeck I	64	120	80	70	36	96	3,68	10 x 18	180
Lübeck 2	64	120	80	56	36	84	3,68	10 x 18	180
Hamburg	34	70	42	30	18	48	2,95	13 x 5,90	76

ROOMS	BOARD-ROOM	THEATER	CLASS-ROOM	U-SHAPE	CABARET	BANQUET	CEILING HEIGHT	LENGTH & WIDTH	SQM
Wismar	14	30	18	15	-	-	2,55	7 x 6	42
Bremen	14	30	18	15	-	-	2,55	7 x 5,50	38,50
Stralsund	14	30	18	15	-	-	2,55	7 x 6	42
Brügge	14	-	-	-	-	-	2,55	7,3x5,5	40
Bergen	14	30	18	15	-	-	2,55	7,3x5,5	40
Visby	8	-	-	-	-	-	2,55	6,6x3,7	25

EVERYTHING YOU NEED UNDER ONE ROOF

PACKAGES

To save you time and make your life easier, we've developed a range of ready-made packages and solutions. If you have more specific needs, our talented team can also design for you customised solutions.

- All-inclusive Day Delegate Packages
- Competitive 24-hour delegate package
- Industry specific solutions for healthcare, financial services and automotive
- Social events
- Creative packages for Christmas Parties

MENUS

Our delicious menus for meetings and conferences will keep your delegates refreshed and energized.

- Simple but mouth-watering
- Nutritionally-balanced, both delicious and healthy
- Easy to eat and presented in style

GUEST ROOMS

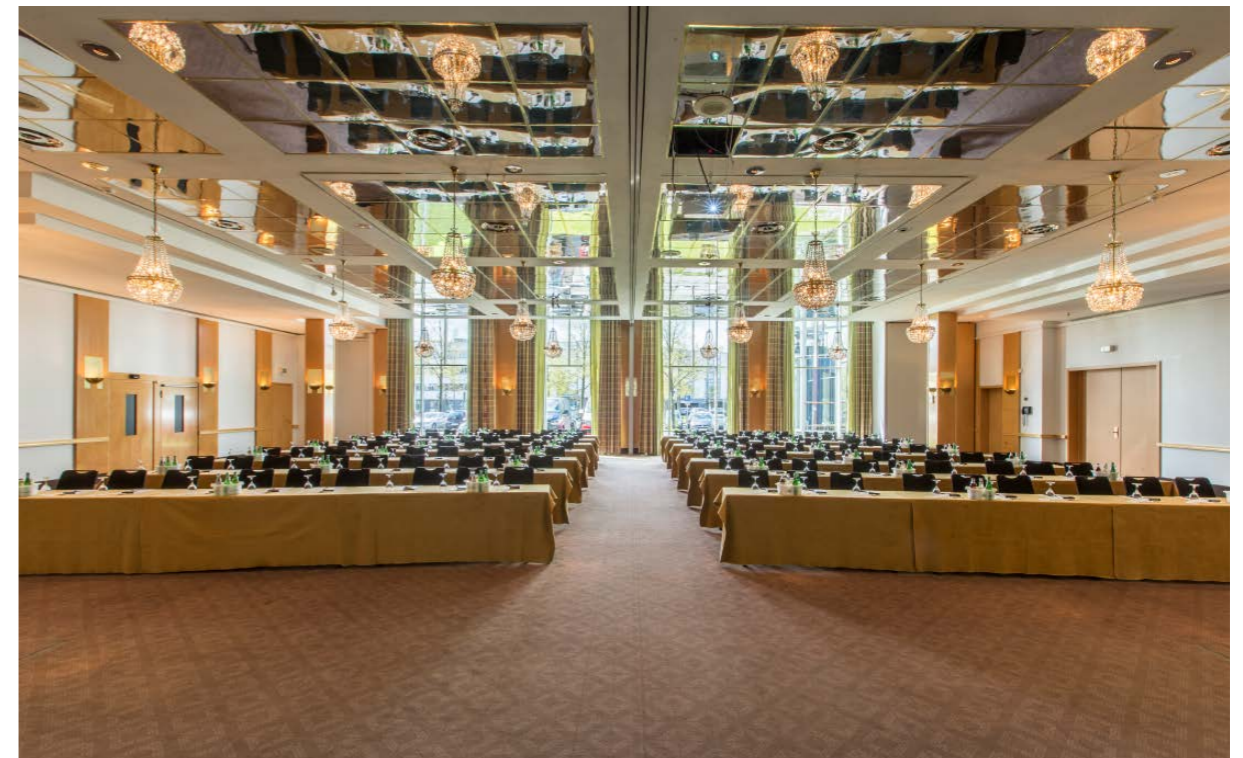
At Radisson Blu we focus on those things that matter most to business travelers. We make sure our guests have everything they need for a comfortable stay.

- 224 modern guest rooms
- 8 superior rooms
- Free high-speed Internet
- Tea and coffee facilities
- Room service
- Complimentary access to heated indoor-pool and saunas

RESTAURANTS & BARS

Enjoy regional and international food and drinks in our two restaurants offering a varied selection of hearty and healthy dishes.

- Restaurant Nautilo; 150 seats
- Beer- and Wine Tavern Kogge; 45 seats
- International and regional food
- 2 Bars & Terraces



RADISSON
REWARDS™
FOR BUSINESS

Everyone deserves a little extra with each booking.
That's why we believe in a valuable loyalty program.

As a member of Radisson Rewards for Business and someone who books meetings and events you can earn 5 points per U.S. dollar spent at Radisson Hotel Group brands worldwide at any of our 1,100+ participating hotels worldwide, including Radisson Collection, Radisson Blu®, Radisson®, Radisson RED, Park Plaza®, Park Inn® by Radisson, and Country Inn & Suites® by Radisson.

Join Radisson Rewards for Business today and start collecting points, free nights, gift cards, airline miles and much more.

www.radissonhotels.com/rewards/forbusiness



LOCATION

BY CAR

Motorway A1, Exit City Centre 3,9km (10 min drive)

BY TRAIN

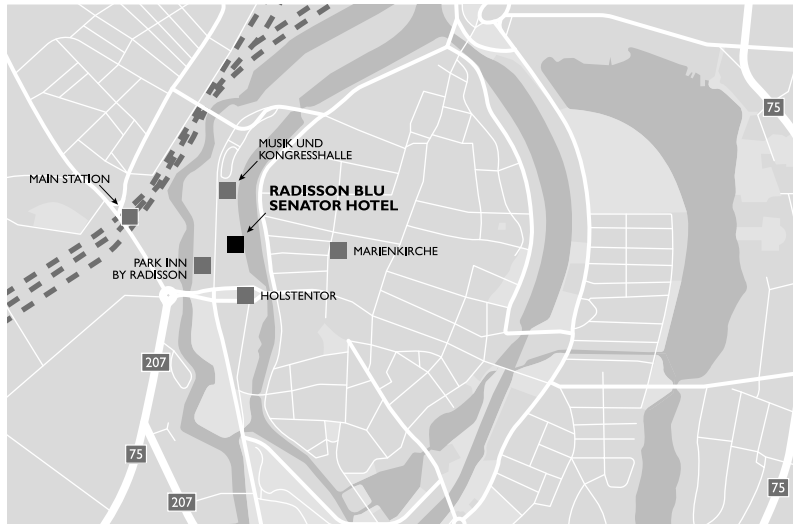
Luebeck Main Station – 650m (8 min-walk)

BY PLANE

Hamburg Airport – 65km (1 hour-drive)

PARKING

On-site underground parking, charges apply



Radisson Blu Senator Hotel

Willy-Brandt-Allee 6, 23554 Lübeck, Germany

T: +49 (0)451 142 0 F: +49 (0)451 142 2222

info.luebeck@radissonblu.com

radissonblu.com/hotel-luebeck



RADISSON
REWARDS

RADISSONHOTELS.COM

RADISSON
MEETINGS